

Autonics

COUNTER/TIMER

FX/FXH/FXL SERIES



Thank you very much for selecting Autonics products.  
For your safety, please read the following before using.

Caution for your safety

- Please keep these instructions and review them before using this unit.
- Please observe the cautions that follow:
  - Warning** Serious injury may result if instructions are not followed.
  - Caution** Product may be damaged, or injury may result if instructions are not followed.
- The following is an explanation of the symbols used in the operation manual.
- caution: Injury or danger may occur under special conditions.

Warning

- In case of using this unit with machineries(Nuclear power control, medical equipment, vehicle, train, airplane, combustion apparatus, entertainment or safety device etc), it requires installing fail-safe device, or contact us for information required.  
It may result in serious damage, fire or human injury
- This unit must be mounted on Panel.  
It may give an electric shock.
- Do not connect terminals when it is power on.  
It may give an electric shock.
- Do not disassemble and modify this unit, when it requires.  
If needs, please contact us.  
It may give an electric shock and cause a fire.

Caution

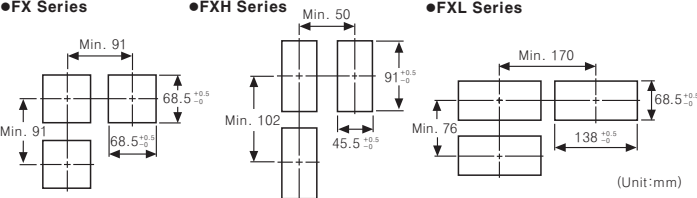
- This unit shall not be used outdoors.  
It might shorten the life cycle of the product or give an electric shock.
- When wire connection, AWG 20(0.50mm<sup>2</sup> ) should be used and screw bolt on terminal block with 0.74N·m to 0.90N·m strength.  
It may result in malfunction or fire due to contact failure.
- Please observe specification rating.  
It might shorten the life cycle of the product and cause a fire.
- Do not use the load beyond rated switching capacity of Relay contact.  
It may cause insulation failure, contact melt, contact failure, relay broken, fire etc.
- In cleaning the unit, do not use water or an organic solvents.  
It might cause an electric shock or fire that will result in damage to the product.
- Do not use this unit at place where there are flammable or explosive gas, humidity, direct ray of the sun, radiant heat, vibration, impact etc.  
It may cause explosion.
- Do not inflow dust or wire dregs into inside of this unit.  
It may cause a fire or mechanical trouble.

Input logic selection

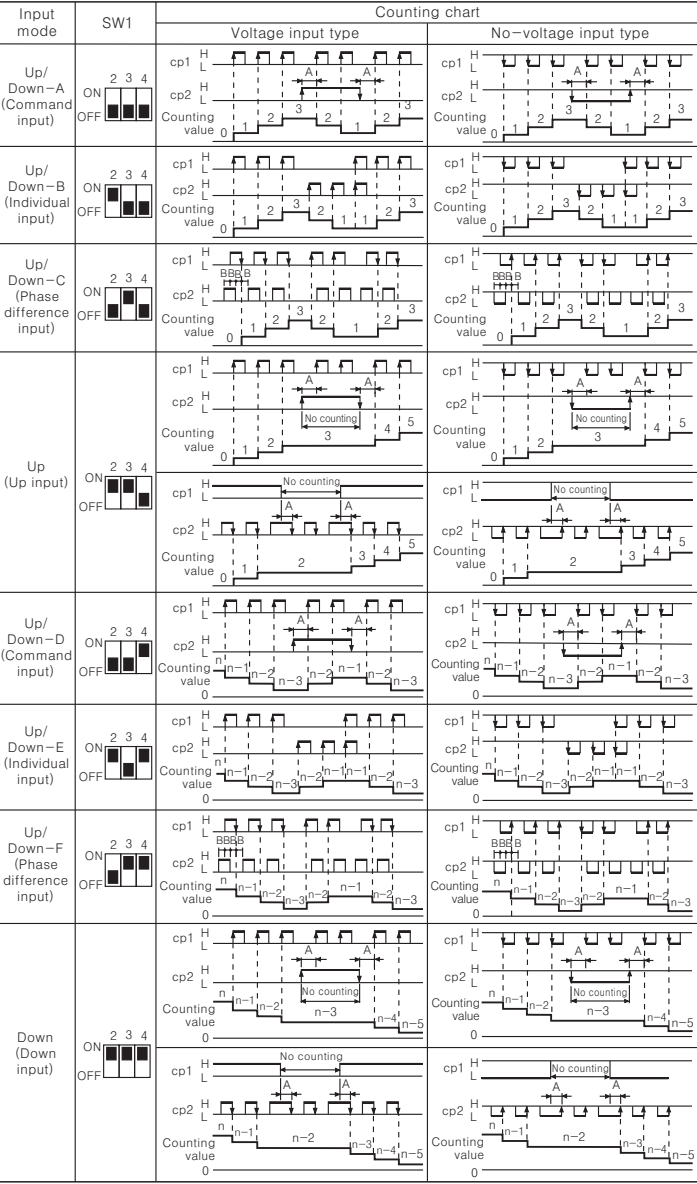
Please be sure to turn power OFF before changing input logic.

FX series	FXL series	FXH series
Input logic is changeable by input logic selection switch located at the one-side of case.	Input logic is changeable by input logic selection switch located at the terminal block.	Input logic is changeable by input logic selection switch(SW3) located at the inside of the case.
<ul style="list-style-type: none"><li>No-voltage input (NPN)</li><li>Voltage input input (PNP)</li></ul>	<ul style="list-style-type: none"><li>No-voltage input(NPN)</li><li>Voltage input(PNP)</li></ul>	<ul style="list-style-type: none"><li>No-voltage input(NPN)</li><li>Voltage input (PNP)</li></ul>

Panel cut-out



Input operation mode(Counter)



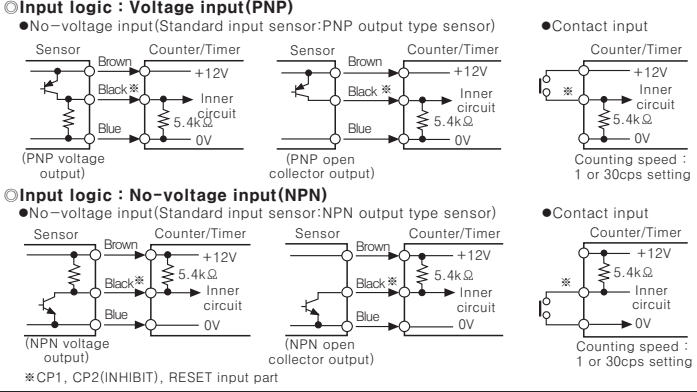
\*A: Over Min. signal width, B: Over 1/2 of Min. signal width.  
Counting miss by one(±1) is occurred if the signal width of A or B is less than min. signal width.  
\*The above specification are subject to change without notice.

Specifications

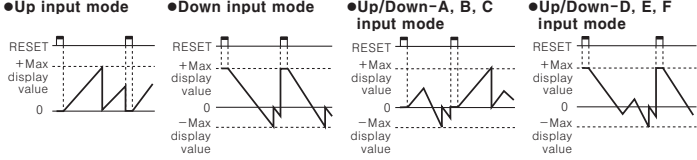
Series	FX		FXH		FXL	
Digit	4	6	4		4	6
Model	Single preset Dual preset Indication	FX4 FX4-2P FX4-I	FX6 FX6-2P FX6-I	FX4H FX4H-2P FX4H-I	FX4L-2P FX4L-I	FX6L-2P FX6L-I
Power supply	AC power AC/DC power					
Allowable voltage range	100-240VAC 50/60Hz 12-24VDC 90 to 110% of rated voltage					
Power consumption	Indiction: Approx. 6VA, Single preset: Approx. 7VA, Dual preset: Approx. 8VA(240VAC 50/60Hz) AC/DC power Indiction: Approx. 5.8VA, Single preset: Approx. 6.8VA, Dual preset: Approx. 7.6VA(24VAC 50/60Hz) Indiction: Approx. 2.7W, Single preset: Approx. 3.3W, Dual preset: Approx. 3.8W(24VDC)					
Max. counting speed for CP1, CP2	Selectable 1cps/30cps/2kcps/5kcps by inner DIP switch					
Min. input signal width	RESET input, INHIBIT input : Approx. 20ms					
Input method	CP1, CP2 (INHIBIT) RESET input					
One-shot output time	1st output : 0.5Sec., 2nd output : 0.05 to 5sec.					
Control output	Con-tact Capacity Type Rating					
Memory retention	10 years(EEPROM)					
External power supply	12VDC ±10% 50mA Max.					
Environ-ment	Ambient temperature Ambient humidity					
Approval	-10 ~ 55°C, Storage temperature: -25 ~ 65°C 35 ~ 85%RH., Storage humidity: 35 ~ 85%RH					

\*Environment resistance is rated at no freezing or condensation.

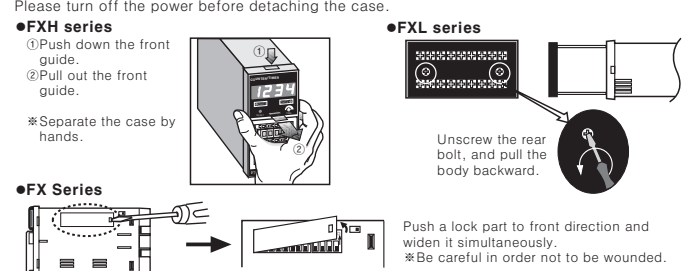
Input connection



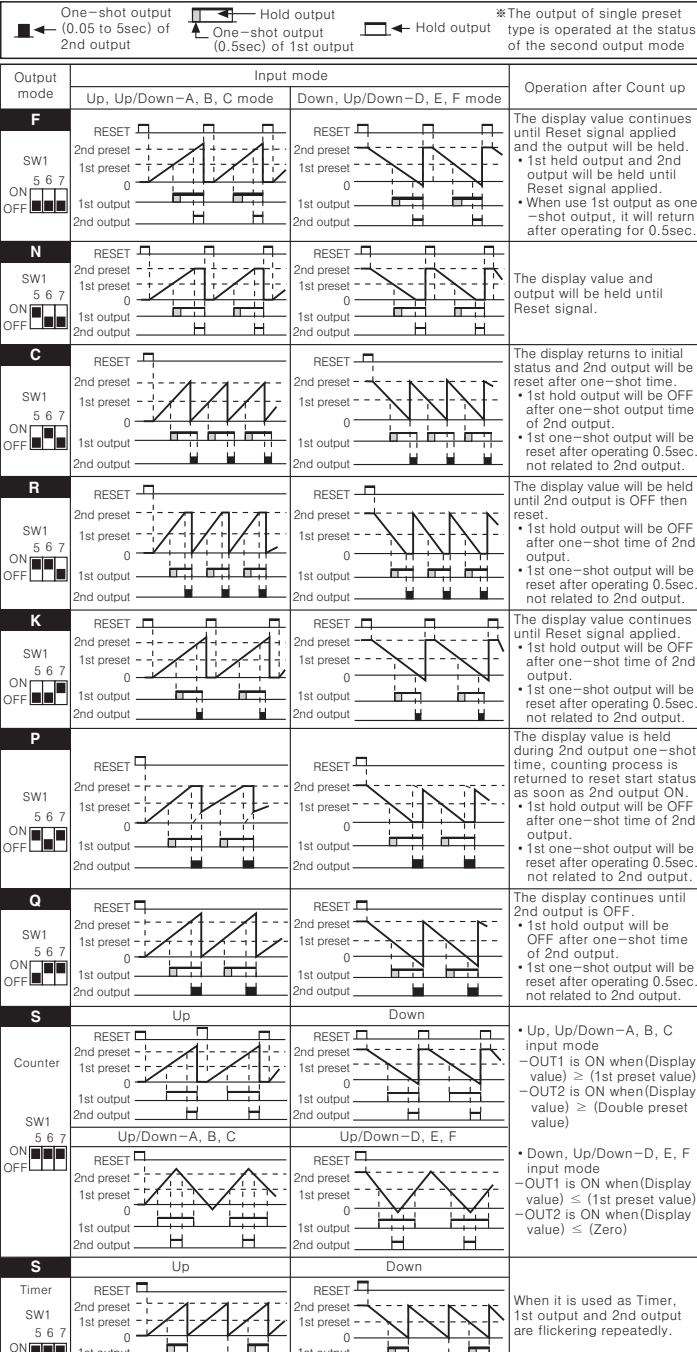
Counting operation of indication model



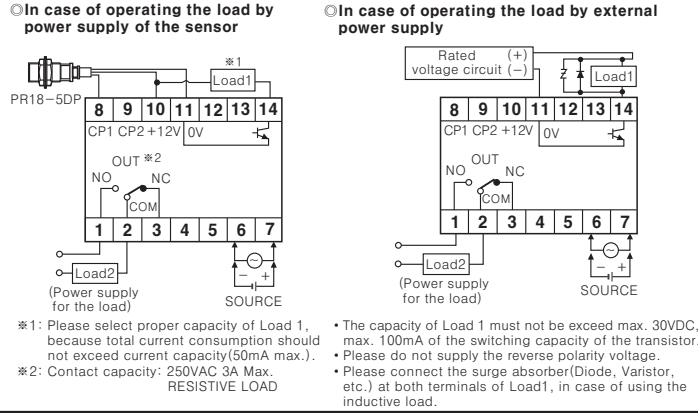
Case & DIP switch detachment



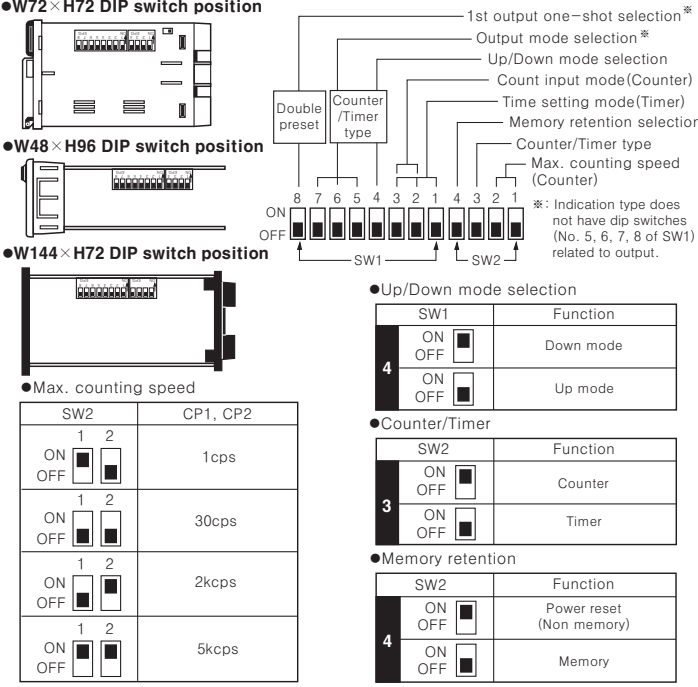
Output operation mode



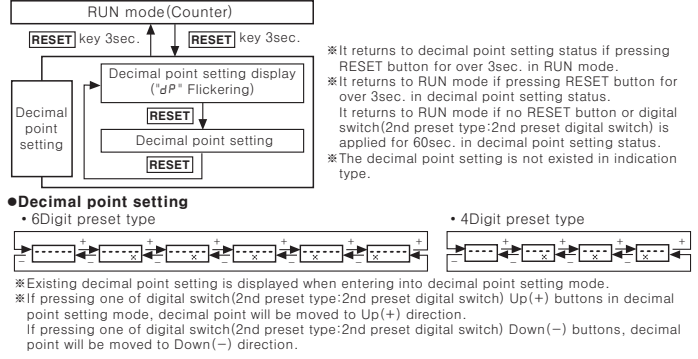
Input · output connection



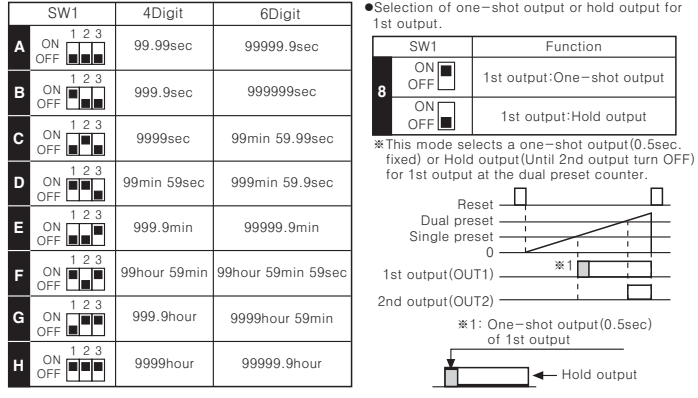
Selection by DIP switches



Decimal point setting(Counter)



Time setting mode(Timer)



Caution for using

- DIP switch setting  
Please be sure to turn power OFF before changing Counter/Timer DIP switches setting.  
If DIP switches setting is changed in power OFF, Counter/Timer must be reset by manual reset or external reset after power ON.
- Error  
Error display  
Zero setting value status  
Return method  
Change setting value which is not zero
- Unit sticker  
The unit sticker is found at the inner box of FX/FXL series.  
According to the usage, the unit sticker can be used.
- Power  
The inner circuit voltage starts to rise up for the first 100ms after power on, the input may not work at this time. And also the inner circuit voltage drops down for the last 500ms after power off, the input may not work at this time.
- Input signal line  
Shorten the cable distance between the sensor and this product.  
Please shielded wire for input signal needed to be long.  
Please wire input signal line separated from power line.
- When test dielectric voltage and insulation resistance of the control panel with this unit installed.  
Please isolate this unit from the circuit of control panel.  
Please make all terminals of this unit short-circuited.
- Do not use this unit at below places.  
Place where there are severe vibration or impact.  
Place where strong alkalis or acids are used.  
Place where there are direct ray of the sun.  
Place where strong magnetic field or electric noise are generated.
- Installation environment  
It shall be used indoor. Altitude Max. 2000m. Pollution Degree 2. Installation Category II.

Main products

- Proximity sensors
- Area sensors
- Door/Door side sensors
- Counters
- Rotary encoders
- Power controllers
- Panel meters
- Graphic/Logic panels
- Temperature controllers
- Tachometer/Pulse(Rate) meters
- Temperature/Humidity transducers
- Stepping motors/drivers/motion controllers
- Laser marking system(CO<sub>2</sub>, Nd:YAG)
- Laser welding/soldering system
- Photoelectric sensors
- Fiber optic sensors
- Pressure sensors
- Timers
- Display units
- Sensor controllers

**Autonics Corporation**  
http://www.autonics.com

**Satisfiable Partner For Factory Automation**

**HEAD QUARTERS**  
41-5, Yongdang-dong, Yangsan-si, Gyeongsang, 626-847, Korea

**OVERSEAS SALES**  
Bldg. 402 3rd Fl., Bucheon Techno Park, 183, Yakdae-dong, Wonmi-gu, Bucheon-si, Gyeonggi-do, 420-734, Korea  
TEL: 82-32-610-2730 / FAX: 82-32-329-0728  
E-mail: sales@autonics.com

**The proposal of a product improvement and development : product@autonics.com**

EP-KE-01-008L